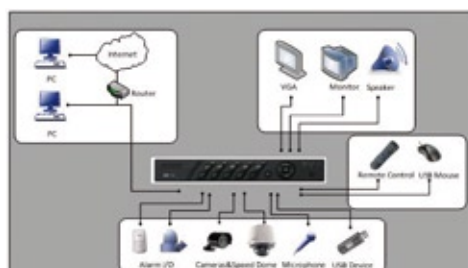


DS-7604HI-S Embedded Hybrid DVR



Key Features

- H.264 video compression
- Up to 4-ch synchronous playback
- Up to 32 users
- Advanced motion detection
- Easy back-up to USB and CD/DVD-RW
- Support up to 1 SATA hard disk drives



Specifications

		DS-7604HI-S
Video/Audio input	Video compression	H.264
	Analog video input	4-ch, BNC(1.0Vp-p, 75Ω), PAL/NTSC adaptive
	IP video input	4-ch 4CIF/2-ch 720P/2-ch UXGA IP camera/dome
	Composited video input	Up to 6-ch (4-ch analog camera+ 2-ch 4CIF IP camera/dome)
	Audio compression	OggVorbis
	Audio input	1-ch, RCA (2.0Vp-p, 1kΩ)
Video/Audio output	Voice talk input	1-ch, using audio input
	Preview resolution	PAL:704×576; NTSC:704×480
	VGA output	1, resolution: 1024×768/60Hz
	Recording resolution	UXGA/720P/4CIF/DCIF/2CIF/CIF/QCIF
	Video output	2-ch, BNC(1.0Vp-p, 75Ω)
	Frame rate	IP channel: 720P: 25(P)/30(N) Analog channel: 4CIF/DCIF: 8fps; 2CIF: 16fps; CIF: 25(P)/30(N)
	Video bit rate	32Kbps~2Mbps, or user-defined (Max. 3Mbps for analog channel, 8Mbps for IP channel)
	Audio output	1-ch, RCA (Linear electrical level, 600Ω)
	Audio bit rate	16kbps
	Synchronous playback	4-ch
Hard disk driver	Dual streams	Yes
	Interface type	1 SATA interface
	Capacity	Each interface supports up to 2TB capacity
External interface	Network interface	1, RJ45 10M/100M adaptive Ethernet interface
	Serial interface	1 RS-485 interface (for PTZ control)
	USB interface	2, USB2.0
	Alarm input	4-ch
General	Alarm output	1-ch
	Power supply	12V DC
	Consumption	≤20W(without hard disk)
	Working temperature	-10°C~+55°C(14°F~131°F)
	Working humidity	10%~90%
	Dimension	315(W)×44.5(H)×230mm(D)(12.40"(W)×1.75"(H)×9.06"(D))
	Weight(without HDD)	≤2500g (5.51lbs)